

## Colorectal Cancer

### What is colorectal cancer?

Colorectal cancer is a disease in which healthy cells in the lining of the colon or rectum change and grow out of control. This cell growth can form a noncancerous polyp that could become a cancerous tumor. Most colon and rectal cancers are a type of tumor called adenocarcinoma. Colorectal cancer is the fourth most common type of cancer diagnosed in the United States.

### What is the function of the colon and rectum?

The colon and rectum make up the large intestine, which plays an important role in the body's ability to process waste. The large intestine turns food digested by the stomach and small intestine into fecal waste, or stool, that leaves the body through the anus.

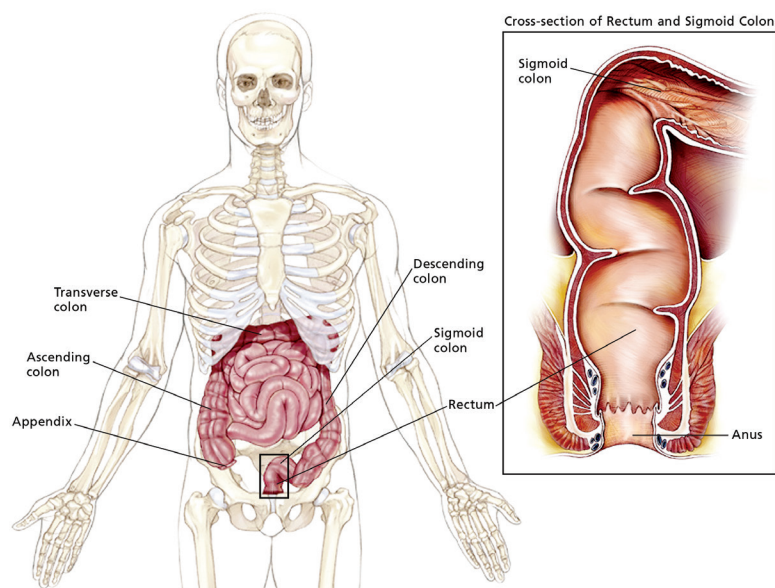


ILLUSTRATION BY ROBERT MORREALE/VISUAL EXPLANATIONS, LLC. © 2004 AMERICAN SOCIETY OF CLINICAL ONCOLOGY

### What does stage mean?

The stage is a way of describing where the cancer is located, if or where it has spread, and whether it is affecting other parts of the body. There are 5 stages for colorectal cancer: stage 0 (zero) and stages I through IV (1 through 4). Find more descriptions and illustrations of these stages at [www.cancer.net/colorectal](http://www.cancer.net/colorectal).

### How is colorectal cancer treated?

The treatment of colorectal cancer depends on the location and extent of the tumor, whether the cancer has spread, and the person's overall health. For cancers that start in the colon, surgery is typically the first treatment. For cancers that start in the rectum (the last 4 to 5 inches of the large intestine), surgery may be the first treatment or chemotherapy and/or radiation may be given before surgery. Additional treatment may be given to lower the risk of the cancer returning or to treat cancer that has spread. This may include radiation therapy and chemotherapy. If the cancer has spread outside the colon and rectum, then chemotherapy or targeted therapy will be used. Occasionally, surgery may also be used to remove cancer that has spread past the colon and rectum. When making treatment decisions, people may also consider a clinical trial. Clinical trials are an option to consider for treatment and care for all stages of cancer. Talk with your doctor about all treatment options. The side effects of colorectal cancer treatment can often be prevented or managed with the help of your health care team. This is called palliative care or supportive care and is an important part of the overall treatment plan.

### How can I cope with colorectal cancer?

Absorbing the news of a cancer diagnosis and communicating with your health care team are key parts of the coping process. Seeking support, organizing your health information, making sure all of your questions are answered, and participating in the decision-making process are other steps. Talk with your health care team about any concerns. Understanding your emotions and those of people close to you can be helpful in managing the diagnosis, treatment, and healing process.

## Questions to ask the health care team

Regular communication is important in making informed decisions about your health care. It can be helpful to bring someone along to your appointments to take notes. Consider asking your health care team the following questions:

- What type of colon or rectal cancer do I have?
- Where exactly is the cancer located?
- Can you explain my pathology report (laboratory test results) to me?
- What stage is the colon or rectal cancer? What does this mean?
- Has my tumor been tested for microsatellite instability and other molecular features?
- Would you explain my treatment options?
- What clinical trials are available for me? Where are they located, and how do I find out more about them?
- What treatment plan do you recommend? Why?
- What is the goal of each treatment? Is it to eliminate the cancer, help me feel better, or both?
- Who will be part of my treatment team, and what does each member do? Do they have experience treating colorectal cancer?
- How will this treatment affect my daily life? Will I be able to work, exercise, and perform my usual activities?
- Will this treatment affect my ability to become pregnant or have children?
- What long-term side effects may be associated with my cancer treatment?
- If I'm worried about managing the costs of cancer care, who can help me?
- Where can I find emotional support for me and my family?
- Whom should I call with questions or problems?

**Find more questions to ask the health care team at [www.cancer.net/colorectal](http://www.cancer.net/colorectal). For a digital list of questions, download Cancer.Net's free mobile app at [www.cancer.net/app](http://www.cancer.net/app).**

The ideas and opinions expressed here do not necessarily reflect the opinions of the American Society of Clinical Oncology (ASCO) or ASCO's Conquer Cancer Foundation. The information in this fact sheet is not intended as medical or legal advice, or as a substitute for consultation with a physician or other licensed health care provider. Patients with health care-related questions should call or see their physician or other health care provider promptly and should not disregard professional medical advice, or delay seeking it, because of information encountered here. The mention of any product, service, or treatment in this fact sheet should not be construed as an ASCO endorsement. ASCO is not responsible for any injury or damage to persons or property arising out of or related to any use of ASCO's patient education materials, or to any errors or omissions.

**Health Care Professionals: To order more printed copies, please call 888-273-3508 or visit [www.cancer.net/estore](http://www.cancer.net/estore).**

# Cancer.Net

Doctor-Approved Patient Information from ASCO®

### AMERICAN SOCIETY OF CLINICAL ONCOLOGY

2318 Mill Road, Suite 800, Alexandria, VA 22314 | Toll Free: 888-651-3038 | Phone: 571-483-1300  
[www.asco.org](http://www.asco.org) | [www.cancer.net](http://www.cancer.net) | [www.conquer.org](http://www.conquer.org)  
© 2017 American Society of Clinical Oncology. For permissions information, contact [permissions@asco.org](mailto:permissions@asco.org).

## WORDS TO KNOW

### Adenoma:

A specific type of polyp that is likely to become cancerous

### Benign:

A tumor that is not cancerous

### Biopsy:

Removal of a tissue sample that is then examined under a microscope to check for cancer cells

### Chemotherapy:

The use of drugs to destroy cancer cells

### Colonoscopy:

A test that allows doctors to look inside the colon and rectum for polyps or cancer using a colonoscope (lighted tube)

### Lymph node:

A tiny, bean-shaped organ that fights infection

### Malignant:

A tumor that is cancerous

### Metastasis:

The spread of cancer from where it began to another part of the body

### Oncologist:

A doctor who specializes in treating cancer

### Polyp:

A growth in the colon or rectum that is a risk factor for colorectal cancer

### Prognosis:

Chance of recovery

### Radiation therapy:

The use of high-energy x-rays to destroy cancer cells

### Targeted therapy:

Treatment that targets the cancer's specific genes, proteins, or the tissue environment that contributes to cancer growth and survival

MADE AVAILABLE THROUGH

**CONQUER CANCER®**  
THE ASCO FOUNDATION